

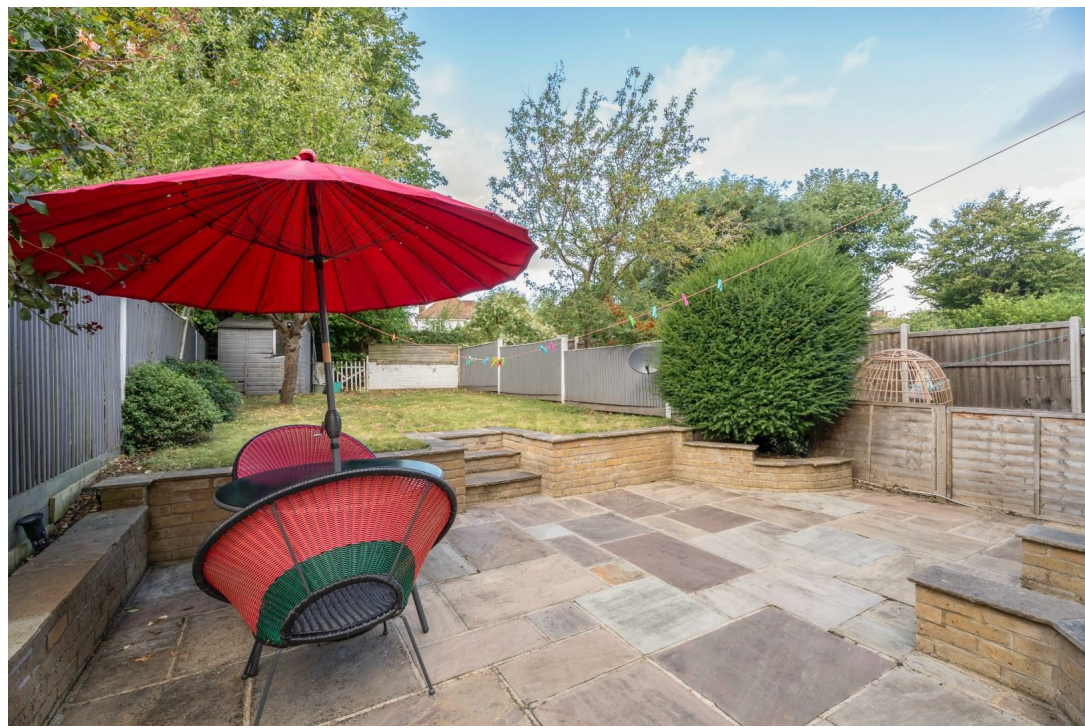


Lawrie Park Road, SE26 | Guide Price £650,000

02087029777

[sydenham@pedderproperty.com](mailto:sydenham@pedderproperty.com)

**pedder**  
We live local



# In General

- Edwardian red brick maisonette
- Ground floor with direct access to garden
- Generous reception
- Superb kitchen
- Two doubles
- Ensuite bathroom
- Family bathroom
- Shared landscaped garden
- Excellent transport links

# In Detail

\*Guide price £650,000-£675,000\*

Set back from the road is this two bed, two bath handsome Edwardian maisonette with a gorgeous brick facade and a black and white chequered step, located a short stroll from excellent transport links, green open spaces, and a range of coffee houses, restaurants and shops in Sydenham

The impressive proportions of the interiors, spreads across the ground floor and includes the light-filled reception to the rear, rich in texture, providing warmth, charm and character, filled with original features. The room also benefits from a generous bay with French doors framed by bespoke full height shutters, a fireplace with cast iron surround and original floorboards. From here there is also direct access into the gardens, extending the entertaining space seamlessly.

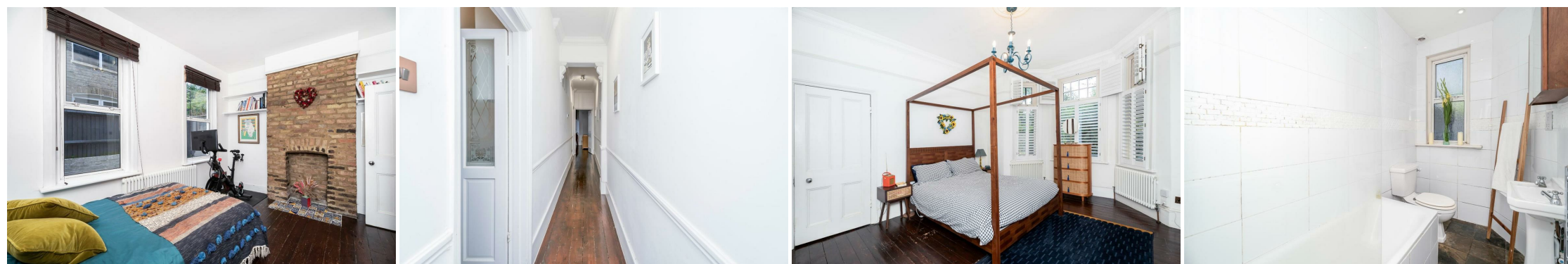
Whether it's preparing a quick supper or hosting a feast, the kitchen design makes cooking a pleasure; abundant storage, Granite worktops, a deep Butler's sink, and a classic range cooker complete the picture. There is a separate utility area keeping everyday chores neatly tucked away and a side door allowing another access route to the garden.

There are two double bedrooms, the primary benefitting from an ensuite bathroom, and a second bathroom with separate shower, both finished with high quality tiling and classic fittings.

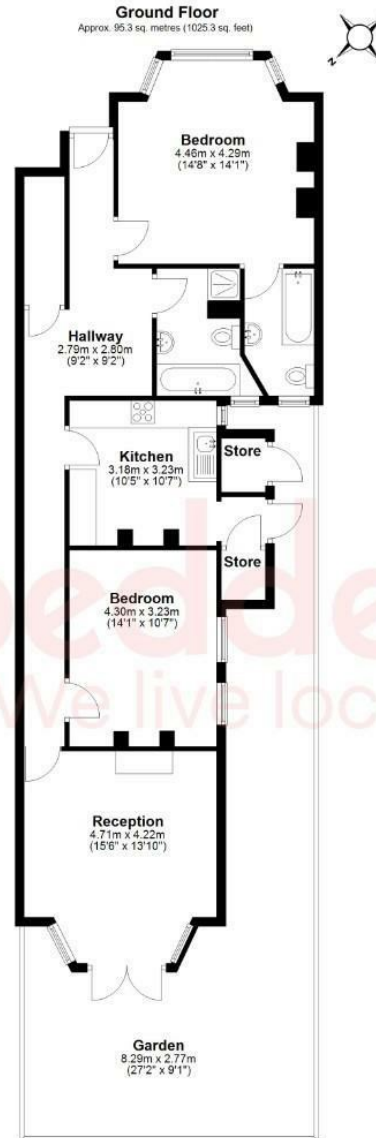
Being a maisonette ensures beautifully balanced, lateral accommodation with spacious, well-proportioned rooms.

Lawrie Park Road is a great location with excellent transport links, including Sydenham, Penge East and Penge West rail, and bus routes like the 176 to Soho. Nearby Crystal Palace Park hosts music events, a Brown & Green café, and a Sunday food market.

EPC: C | Council tax band: C | Lease: 999 years remaining | SC: N/A | GR: N/A | BI: TBC



# Floorplan



Total area: approx. 95.3 sq. metres (1025.3 sq. feet)

Copyright www.pedderproperty.com 2024. These plans are for representation purposes only as Defined by RICS - Code of Measuring Practice. Not drawn to scale. windows and door measurements are approximate. please check dimensions, shapes and compass bearings before making any decisions reliant upon them.  
Plan produced using PlanUp.

Energy Efficiency Rating		Current	Potential
Very energy efficient - lower running costs			
102 plus) A			
81-101) B			
69-80) C			
55-68) D		72	79
39-54) E			
21-38) F			
1-20) G			
Not energy efficient - higher running costs			
England & Wales		EU Directive 2002/91/EC	

Pedder Property Ltd trading as Pedder for themselves and for the vendor/landlord of this property whose agents they are, give notice that (1) these particulars do not constitute any part of an offer or contract, (2) all statements contained within these particulars are made without responsibility on the part of Pedder or the vendor/landlord, (3) whilst made in good faith, none of the statements contained within these particulars are to be relied upon as a statement of representation or fact, (4) any intending purchaser/tenant must satisfy him/herself by inspection or otherwise as to the correctness of each of the statements contained within these particulars, (5) the vendor/landlord does not make or give either Pedder or any person in their employment any authority to make or give representation or warranty whatsoever in relation to this property.